

KIMER

We create space



Since 1963



Mezzanines



Advantages

Quick, easy, and clean assembly.

Fully dismantlable, making relocation and reassembly simple.

Compatible with lift platforms or freight elevators.

Safe and durable system.

Description

Maximize your warehouse space and multiply your storage capacity by up to three times.

Kimer mezzanines are custom-designed to meet your specific needs. They are a flexible and scalable system that can adapt to the growth of your business.

Installing a mezzanine is the best solution to increase your space.



Applications

Warehouses that require the creation of new spaces for various purposes.

Kimer mezzanines can be used as areas for receiving and preparing orders or even as additional zones for work or merchandise storage.

They can also be combined with other products to create sorting areas or office spaces.



UNE-EN 1090



KIMER ALWAYS ON THE SIDE OF SAFETY
We have EN 1090 certification, which guarantees the quality and safety of our mezzanine systems.





Since 1963



KIMER **ADVANTAGES**

- 1
- 2
- 3
- 4
- 5

1 Custom engineering projects

Kimer uses the most advanced parametric CAD design systems.

These allow us to create 3D models of components and structural assemblies for all our storage systems.

This provides more tailored results than standard structural design software.



2 The strictest standards

- Technical Building Code (CTE), RD 314/2006.
- EN 1993 Eurocode 3 "Design of Steel Structures".



3 Manufacturing quality

Kimer profiles all components of its mezzanine system to ensure top product quality.

We use the most innovative machinery on the market, guaranteeing the best precision and finish.

KIMER has the EN1090 which ensures high quality production.



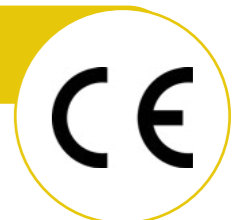
4 Space saving

The Kimer mezzanine allows you to double or even triple usable surface area in open spaces without sacrificing ground level, thanks to the wide spacing possible between columns.



5 Safety

Every Kimer mezzanine is assigned a CE code. We apply the most stringent structural calculation standards on the market.





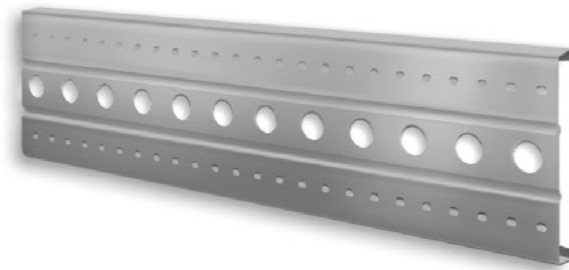
Finishes

Galvanized

At Kimer, we only use top-quality materials. We use galvanized steel **with a Z275 quality or higher.**

This quality has a higher zinc content, offering the **best protection against rust under normal indoor conditions.**

This is the standard finish for the primary beams and secondary beams of Kimer mezzanines.



Painted

Kimer uses only high-quality epoxy paint with a gloss finish. We have the most modern machinery to ensure excellent corrosion protection and an even, aesthetic finish. Our automated robotic tunnels apply the following treatments:

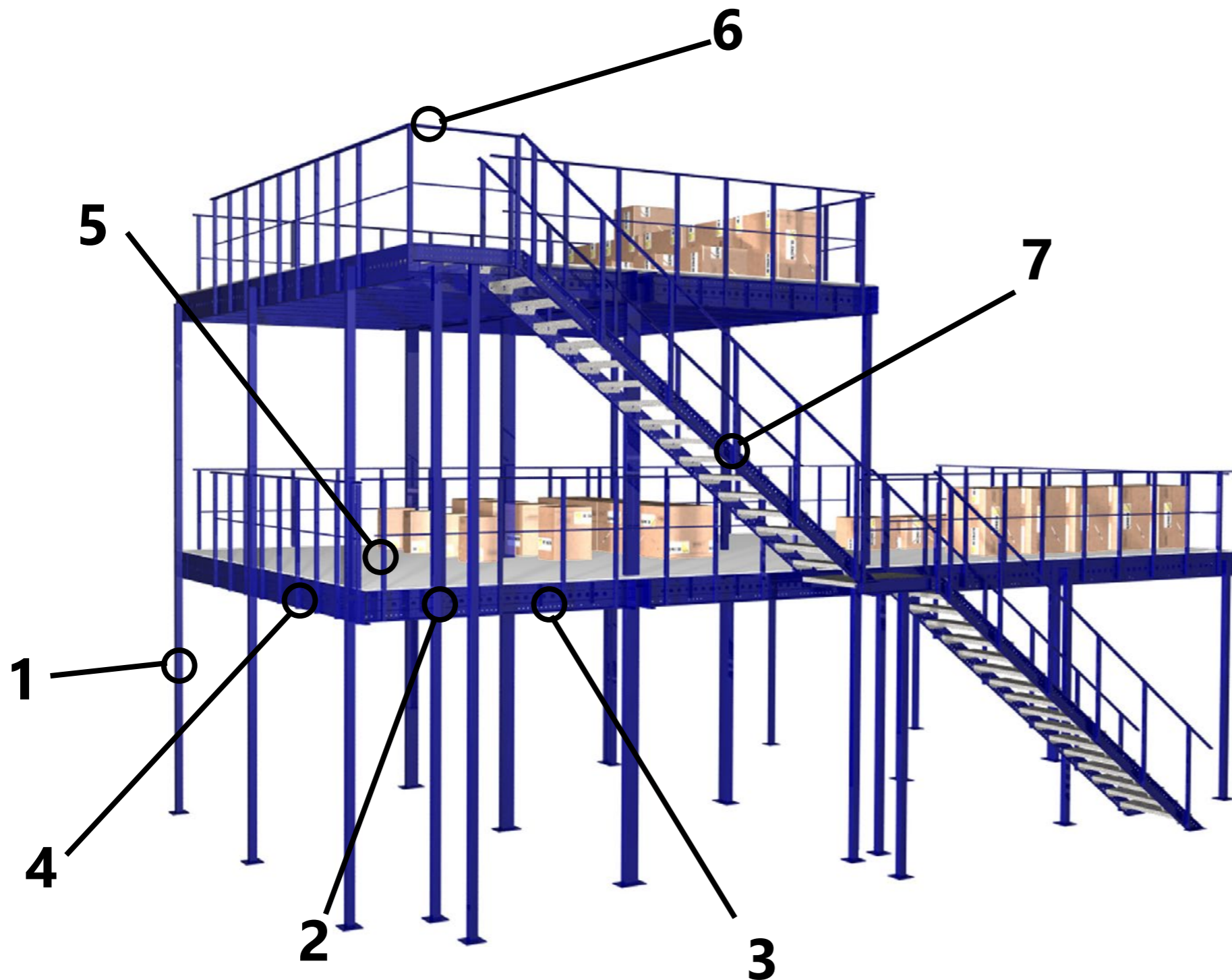
- Degreasing.
- Phosphating: **Kimer** does not use pollutants in this process.
- Rinse with running water.
- Washing with demineralized water: The water used in our facilities is treated by reverse osmosis for reuse.
- The facilities are treated using reverse osmosis for reuse.
- Painted with class M-1 fire-resistant paint according to UNE-23.727-90 Standard using electrostatic spraying.



Pillars, joint plates and stairs
Blue RAL 5003

Primary and Secondary beams
Galvanized Steel

System components



- 1 COLUMNS
- 2 PRIMARY BEAMS
- 3 SECONDARY BEAMS
- 4 JOINT PLATES
- 5 FLOORING
- 6 RAILINGS
- 7 STAIRS

R&D DEPARTMENT

Kimer works with the most advanced tools on the market, allowing us to meet even the most specific storage needs.

Our R&D team will develop the right solution for your warehouse requirements.

We create space



Structural components

Columns

Basic structural elements that supports the structure. It transmits the loading to the floor.

Depending on the mezzanine's function and load, columns can be single, double, or composite. Three standard models are available:

COLUMN 80: 80 x 80 mm square tube.

COLUMN 90: 90 x 90 mm square tube.

COLUMN 100: 100 x 100 mm square tube.

Larger sizes and thicknesses are available for higher loads.

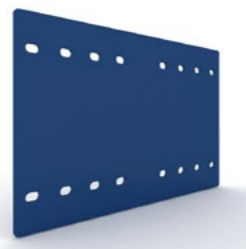
Available Finish: Blue RAL 5003.

Each column has 450x300x6 mm head plates laser-cut for precision and quality.

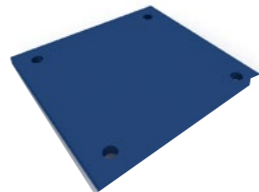
The base is also equipped with 8 and 10 mm laser-cut plates to ensure proper load transfer to the floor.

Kimer is certified under EN 1090, ensuring top-tier quality control in all welds.

Head plate



Baseplate
Simple abutment



Baseplate
Composite abutment



Column types

Single column Double column Composite column

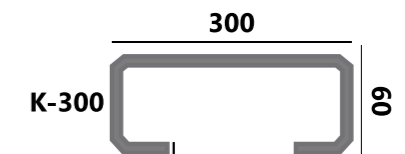
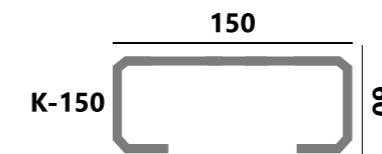


Primary and secondary beams

Cold-formed from steel strip to ensure accurate measurements and excellent finish. A central hole allows cable routing — ideal for maximizing clearance and hiding lighting cables.

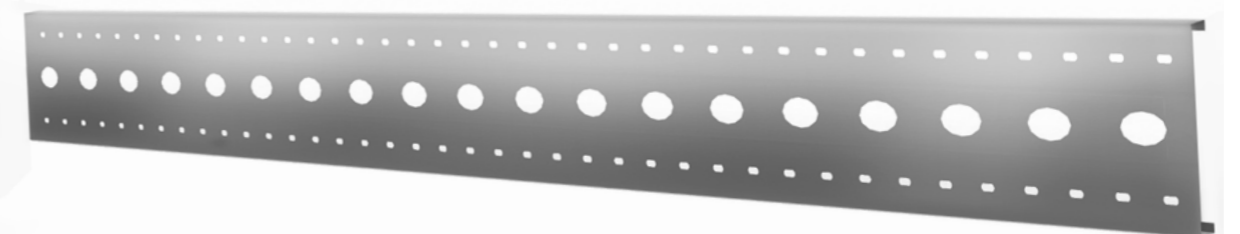
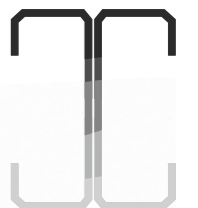
Kimer offers three profile sections and various thicknesses depending on load requirements.

These are C-shaped profiles with two ribs. They are the main load-bearing elements, responsible for supporting and distributing system weight to the floor.



Our modular mezzanine system also allows for greater spans or heavier loads by combining two profiles.

Standard Finish: galvanized (optional painted RAL color with epoxy finish).





Structural components

Metal joints

These connect primary and secondary beams.
There are three types:

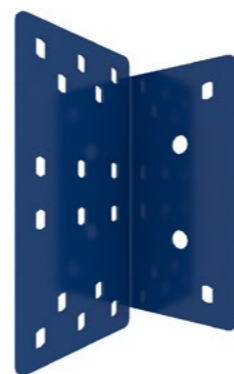
- K300** (for connecting K300 beams to K300 beams).
- K300-150** (for connecting K150 beams to K300 beams).
- K150** (for connecting K150 beams to K150 beams).

Available finishes:

 Blue RAL 5003



K150 Metal Joint



K300 Metal Joint





Mezzanine flooring

Kimer offers various flooring options to meet every need — from load capacity and foot traffic, to ventilation and fire protection.



Metal floors

PERFORATED
TECHNICAL FLOOR



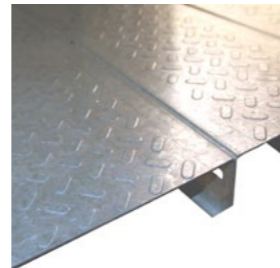
PRESSED GRID



SLOTTED
METAL FLOOR



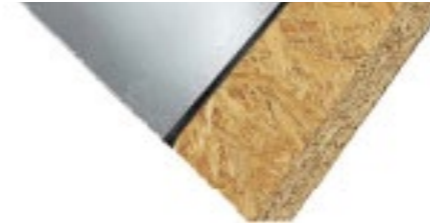
SOLID
METAL FLOOR



Structural board

Kimer uses only high-quality structural board to ensure safety.

BOARD



BOARD + GALVANIZED SHEET



SKIRTING

Extra protection for mezzanine floors and walkways. Two models available:

ECO: C-shaped profile installed above the selected floor.

Z: Custom-folded to cover the edge of the chosen floor.



Kimer mezzanine with board flooring and skirting.



Accessories

Kimer stairs

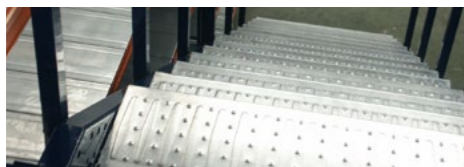
Custom-made to suit your exact needs.

Kimer offers both straight stairs and stairs with a landing, adapting to different system heights.



STRAIGHT STAIRCASE

Additionally, two tread finishes are available for Kimer stairs:



BLIND STEP
NON-SLIP



PRESSED GRID STEP

Two stair models are available:

K-150: A robust staircase made to measure. To maintain the proper step spacing, it is available for the following heights: 2500-2650-2850-3050-3200 mm.

BEST VALUE FOR MONEY

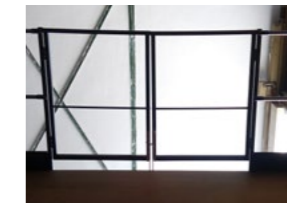
Tubular: Any specific height is possible, as we adapt the steps to the exact desired height by laser-cutting a 150 x 60 tube.



STAIRCASE WITH LANDING

Doors

Kimer offers two types of doors. The Kimer swing gate provides added safety by preventing the operator from falling while moving loads.



ECO DOOR



UP-AND-OVER DOOR

Kimer railings

An essential safety element at the ends of walkways or to define open mezzanine spaces.

Two types of railing are available:

Eco Railing: Bolted directly to the K-300 / K-150 profile or, in the case of wooden floors, on top of the board.

Standard height: 1100 mm.

Tubular Railing: Always bolted to the profile. The galvanized round tube is self-drilled into brackets welded to the front of the uprights. This way, the railing is always positioned inside the mezzanine platform.

Standard height: 1100 mm.

BEST VALUE FOR MONEY



ECO RAILING



TUBULAR RAILING

Regulations

Structural calculations

Kimer uses a structural calculation program that analyses each installation as a whole.

Kimer has developed this program in collaboration with the Polytechnic University of Valencia. It evaluates the entire structure, incorporating the properties obtained from load tests on each component.

STRUCTURAL DESIGN STANDARDS

UNE EN 1993-1-2-EA-95: Eurocode 3

CTE "Technical Building Code".

UNE EN ISO 14122-3 Safety of machinery – Permanent means of access to machinery – Part 3: Stairs, stepladders, and guardrails.

SAFETY AND DEFLECTION COEFFICIENTS

Safety factor: 1,5

Maximum allowable deflection in beams: $\text{Span}/300$



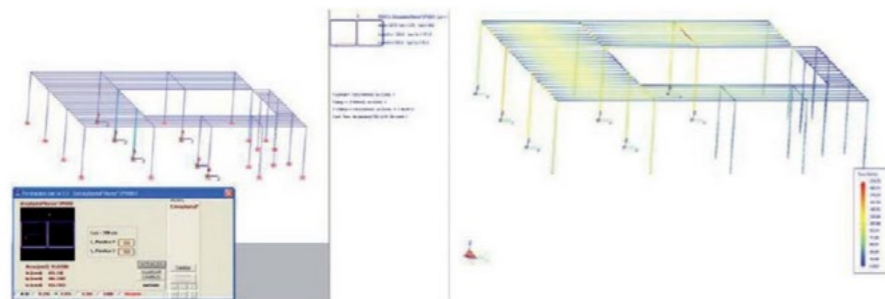
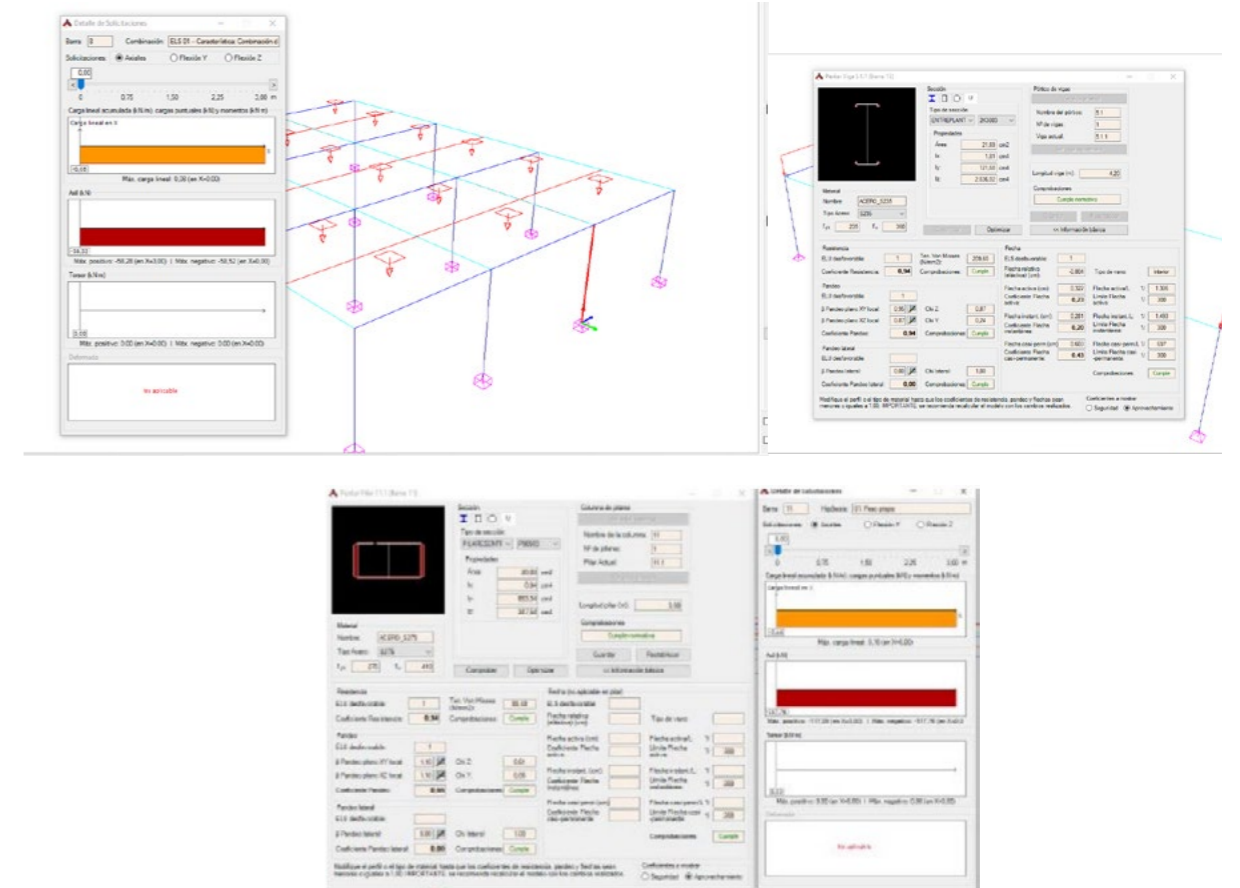
Several factors must be considered to ensure a mezzanine is 100% safe. This requires both a structural study and testing of the components and materials used.

The structural calculation process is mainly divided into two stages:

► **Structural analysis:** Evaluates the stability of the installation and its elements, with particular focus on the behavior of the column connections (both to the beam and the floor).

Element analysis: In this second phase, each structural component is individually verified.

Additional factors such as the weight of the structure itself and its load must also be considered.



IMAGES FROM THE TECHNICAL SOFTWARE TO CALCULATE OUR KIMER STRUCTURES

We create space

THE BRAND

At Kimer, we have been designing and manufacturing storage systems for over 60 years.

We work every day to help you make the most of your space. We manufacture all types of storage racking systems, applying the same dedication and enthusiasm to every project, regardless of its size.

Everyone at Kimer is confident in our ability to help you find everything you need for your new warehouse installation.

If you want to learn more about our company or our products, these QR codes will take you to our website and our corporate video, respectively.



WEBSITE QR



VIDEO QR

HISTORY



When Kimer opened its first factory in Quart de Poblet in 1963, it contacted local artist **Nassio Bayarri** to create a piece that would reflect the company's image and aspirations.

As a result, Nassio created the artwork that now crowns our façade, made from our very first product: the slotted angle profile. The piece represents the Moon landing, and was completed in 1968. Apollo 11 landed on the Moon in 1969—one year after Kimer installed this sculpture. From that moment until today, Kimer has remained at the forefront of technology and development.

Looking to the future, **Kimer** continues to focus on growth based on quality, environmental awareness, and technological innovation.

R&D DEPARTMENT

At **Kimer**, we have an R&D department that designs all our products using the most advanced structural analysis software.

We study stress, deformation, and tension distribution to ensure our installations are **100% safe** while offering **the most competitive prices**.

To validate our calculations, the main components of our products are tested for breakage, deflection, and fatigue, both internally and by independent laboratories.



KIMER QUALITY

EN 1090 Certification

Kimer is certified to issue CE marking for self-supporting structures. This standard includes regular testing of welding penetration on both robotic and manual welds.

ISO 9001 Certification

Ensures ongoing quality controls and the traceability and registration of our products.



All our products are 100% manufactured by Kimer.

We use only certified premium-grade steel.

We guarantee full traceability of all components.

100% Spanish manufacturing.

We apply the most rigorous design standards on the market.

Our key components are regularly tested by independent, highly regarded laboratories.

We do not use harmful components in our painting processes.

We recycle all process water using reverse osmosis.

We treat contaminated elements via pyrolysis for later recycling.



ENVIRONMENT

FAMILY-OWNED COMPANY

At Kimer, we are deeply aware of the current environmental crisis and strive to be part of the solution.

That's why we are committed to the following actions:

- ▶ A 714 kWp solar self-consumption installation, preventing the emission of 400 tons of CO₂ per year.
- Eliminating all harmful components from our painting processes.
- Recycling all water used in our production through reverse osmosis.
- Pyrolysis treatment of contaminated elements for responsible recycling.
- Minimizing natural resource use and the generation of hazardous waste.

**KIMER HOLDS
ISO 14001
ENVIRONMENTAL
CERTIFICATION**



At Kimer, we take great pride in being a **family business**. For over 60 years, we have evolved and adapted to changes in the market, always maintaining strong values and a family-oriented culture. This allows us to offer **close, personalized** service and find the right solution for every client.

We are truly proud to be what we are: a family company.

INTERNATIONALIZATION

TECHNOLOGY



Today, Kimer exports **80% of its production to over 45 countries.**

Our experienced commercial and logistics team allows us to meet both national and international demands in a constantly evolving industry.

Currently, Kimer operates two production plants totaling over 25,000 square meters, with a production capacity of 55,000 tons per year.

At Kimer, we use the latest technologies in the manufacturing of steel profiles. Our state-of-the-art CNC roll forming machines deliver clean cuts and precise punching.

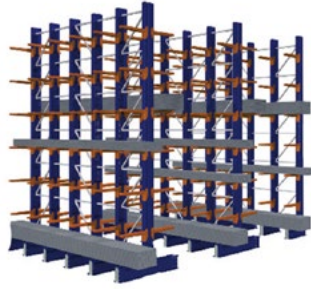
We apply robotic welding controlled by artificial vision systems to ensure clean, uniform welds with virtually no spatter. We also have in-house laser cutting technology (for both tubes and sheets), allowing us to develop custom accessories to meet all our clients' needs.

With automated painting booths, we apply epoxy coatings that give our products high chemical resistance to corrosive substances, along with a high-quality aesthetic finish.

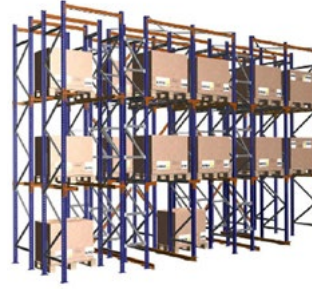
KIMER Products



Picking



Cantilever



Compact Pallet Racking



Easy rack



Pallet racking



Lockers



Slotted angle

We create space

Avda. Santa María de Poblet, 26
46930 Quart de Poblet (Valencia)

+34 961 536 134

kimer.com
comercial@kimer.com

KIMER
We create space



Since 1963

Website



Corporate video



Official dealer